



International
COCOA
Initiative

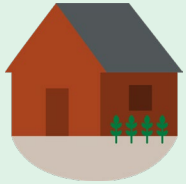
How can child-friendly spaces help protect children in cocoa communities?

Findings from a pilot in cocoa-growing communities in Côte d'Ivoire

June 2024



1. Identified and equipped spaces in 3 communities



3. Raised awareness within the community



5. Supervised and monitored



ICI pilot project in Côte d'Ivoire

2. Selected and trained facilitators



4. **Q1 / 2022**

Opened child-friendly spaces to all children aged 5 to 17; open on Wednesdays, weekends and during school holidays



Project objectives



Offer an alternative to going to the fields



Create links between peers



Raise awareness about the importance of extra-curricular activities



Detect and refer cases of child abuse



Research question

Is this approach effective in protecting children in the context of cocoa communities in Côte d'Ivoire, and feasible to integrate with existing approaches?

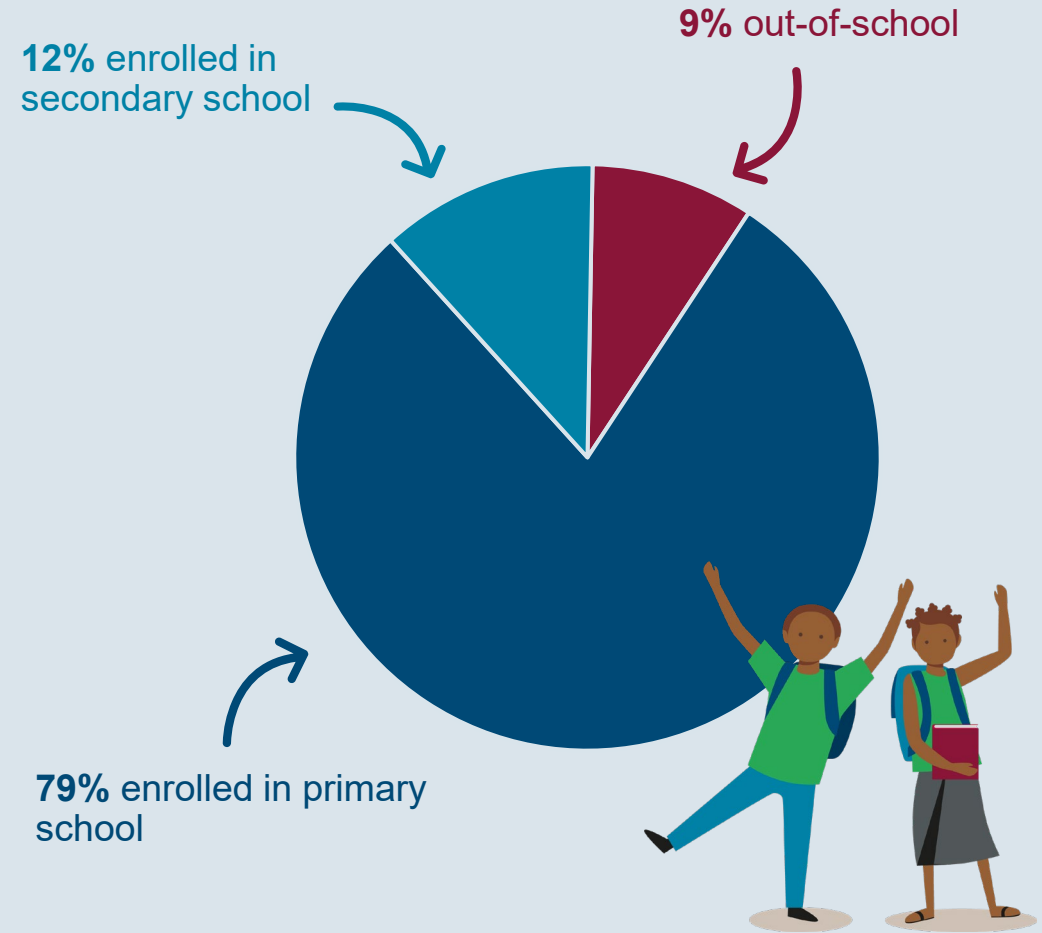
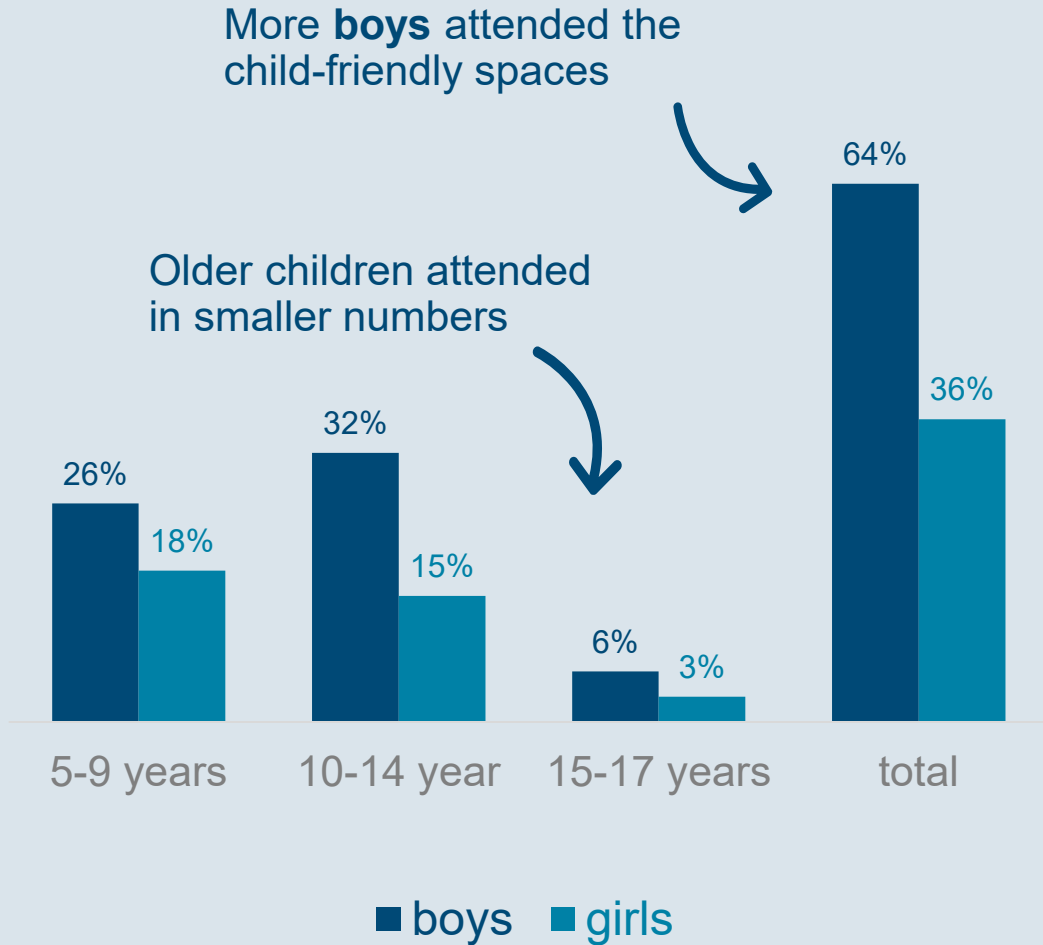
Data sources

- Registration and attendance lists
- Surveys on Knowledge, Attitudes and Practices (KAP)
- Qualitative interviews and Focus Group Discussions with children, parents, and facilitators

Key findings:
Who attended?



Who attended the child-friendly space at least once?





Reasons for not attending the child-friendly spaces:



Work obligations



Games and activities did not match age group's interest



Lack of parental awareness

Which parents sent their children to the child-friendly spaces?



Single parents were more likely to take their children to the child-friendly spaces

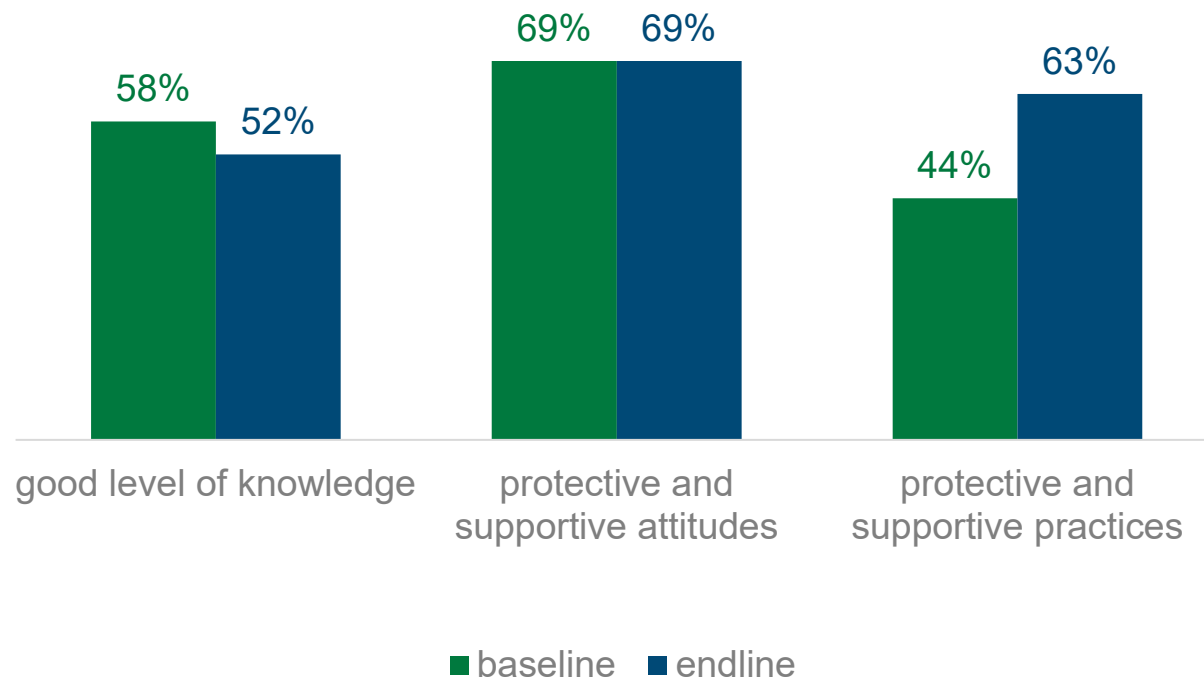


Parents who sent their children to the child-friendly spaces had **higher levels of education**, compared to the average education level within the community

Key findings:
How did parents' knowledge, attitudes and behaviour change?



Proportion of parents who demonstrated "good" levels of knowledge, protective attitudes, and protective practices



While knowledge of child labour decreased, parenting practices improved



Key findings:

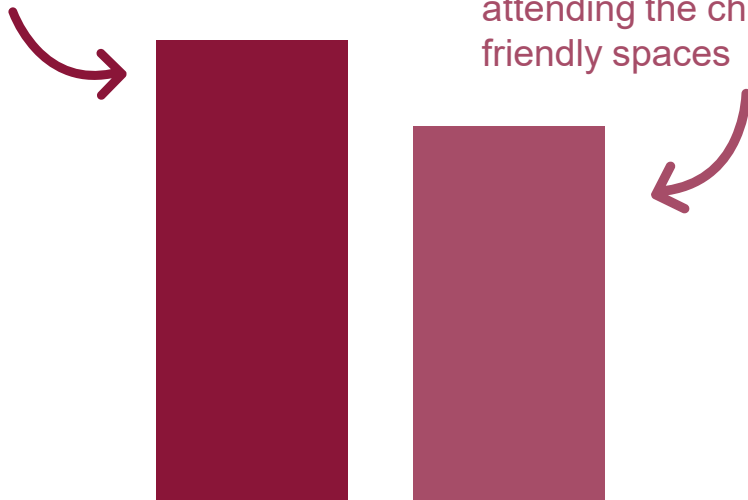
Did the project
affect children's
engagement in
child labour?



Take-up was higher amongst children in child labour

41% of children attending the child-friendly spaces had been identified in child labour

Compared to 31% of children in the same communities *not* attending the child-friendly spaces



Children attending the spaces were more likely to stop working

82% of children in child labour who attended the child-friendly spaces had stopped working after one follow-up visit

Compared to 43% of children in child labour who didn't attend the child-friendly spaces



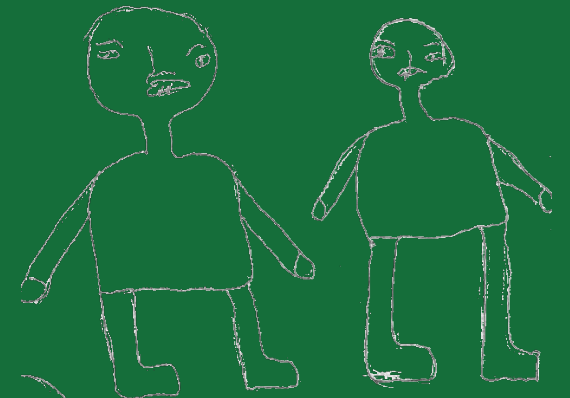
NB: The number of children followed up is too small to draw robust conclusions on the impact on child labour.

Key findings:
How did children
perceive the child-
friendly spaces?





A place to play,
make new friends,
and feel happy



nouveaux amis



An opportunity to practice reading, drawing, singing, and French language skills



An alternative to helping
parents with work in the fields

“When I come to the child-friendly
space, I'm happy and enjoy myself.
But when I go to the field and take the
machete to clean up, it hurts me.”



Recommendations from children:



Replace damaged games and materials



More variety and change in games and activities

Key findings:
How did facilitators
perceive child-
friendly spaces?





A **safe environment** for children to socialise



Learning opportunities complementary to school



Strengthens **reading and cognitive skills**

APPUI AUX INITIATIVES COMMUNAUTAIRES



International
COCOA
Initiative

LES ENFANTS AU BORD !

“[The children] have [...] developed protective behaviour and adopted better hygiene practices, they got to know their rights and duties, and this has helped bring the children closer together.”

A photograph of two young girls swinging happily on a colorful playground. The girl on the left is wearing a blue dress with a floral pattern, and the girl on the right is wearing a white dress with a floral pattern and a red and blue skirt. They are both smiling and holding onto the blue ropes of the swing. The playground is made of yellow and purple metal frames and is surrounded by a fence made of bamboo or wooden poles. The ground is dirt, and there are trees in the background.

Recommendations from facilitators:

- Fence spaces
- Provide drinking water and first aid kits
- Enlarge spaces
- Provide meals

Key findings:
How did parents
perceive child-
friendly spaces?





“Before, the children accompanied us to the field, but now they are free and happy to take part in the various activities at the child-friendly space.”

- Childcare facility
- Safe space to develop skills
- Good for community participation
- Increased awareness of child protection



Recommendations from parents:

- Fence spaces
- Provide drinking water and first-aid kit
- Enlarge spaces
- Provide meals
- Increase number of facilitators

Overall, parents would like child-friendly spaces to continue to operate. Communities plan to secure funding to pay facilitators.

Main takeaways

- Child-friendly spaces respond to a need for **childcare** while parents are in the fields
- Spaces offer a safe space for children to **play**, develop important **skills** and **socialise** with peers, complementing their school education
- **Parents** appreciate the concept and pedagogical approach of child-friendly spaces



Recommendations

- **Scale-up** this approach and include as part of systems to prevent and address child labour
- When setting up and equipping child-friendly spaces, ensure **infrastructure and equipment** meet the communities' and children's needs
- Ensure the **sustainability** of this and future projects by securing long-term funding for facilitators



Want to learn more?

How can child-friendly spaces help protect children in cocoa-growing communities?

www.cocoainitiative.org | info@cocoainitiative.org

ICI Secretariat in Switzerland
Chemin de Balaxert 9
1219 Châtelaine | Switzerland
+41 22 341 47 25

ICI National Office in Côte d'Ivoire
Il Plateaux, 7ème Tranche, Lot 3244, Ilot 264
Abidjan-Cocody | Côte d'Ivoire
+225 27 22 52 70 97

ICI National Office in Ghana
No. 16, Djanie Ashie Street
East-Legon | Accra | Ghana
+233 302 998 870



International
COCOA
Initiative